

The Economics of European Regions: Theory, Empirics, and Policy

Dipartimento di Economia e Management

Co-funded by the
Erasmus+ Programme
of the European Union



Project funded by
European Commission Erasmus + Programme –Jean Monnet Action
Project number 553280-EPP-1-2015-1-IT-EPPJMO-MODULE

Davide Fiaschi Angela Parenti¹

November 5, 2019

¹davide.fiaschi@unipi.it, and angela.parenti@unipi.it.

- Solow model with poverty trap or better **multiple equilibria** (but why only two?)
 - ☑ **endogenous investment rate**
 - ☑ **endogenous growth rate of population/employment**
 - ☑ **increasing returns to scale (change in output composition)**
 - ☑ **endogenous level of human capital**
- ☑ **Factor reallocation** across regions
 - ↗ Core-periphery model: **two sector economy** and factor reallocation across regions
- Solow with **limited technological spillovers**
- Solow with **factor reallocation** across regions and **limited technological spillovers**
- Solow with **many intermediate goods**

Growth rate of compensation per employee, GDP and GVA per worker in EU regions

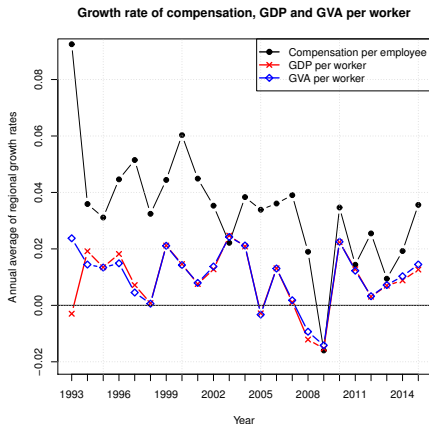


Figura: Growth rate of compensation per employee, GDP and GVA per worker in

Distribution dynamics of compensation per employee

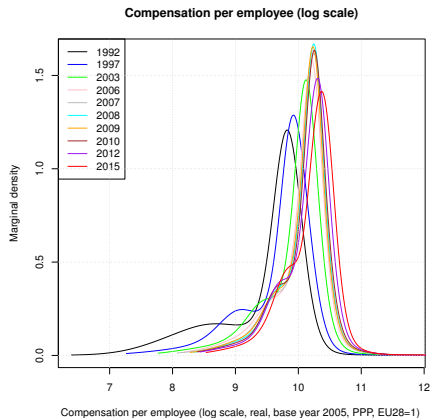


Figura: Distribution dynamics of compensation per employee

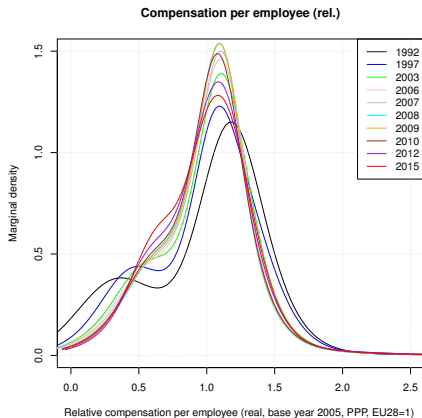
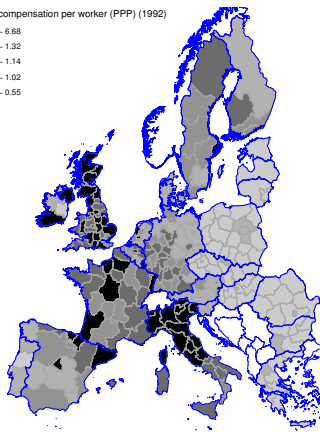


Figura: Distribution dynamics of (rel.) compensation per employee

Distribution dynamics of relative compensation per employee

Relative compensation per worker (PPP) (1992)



Relative compensation per worker (PPP) (2015)

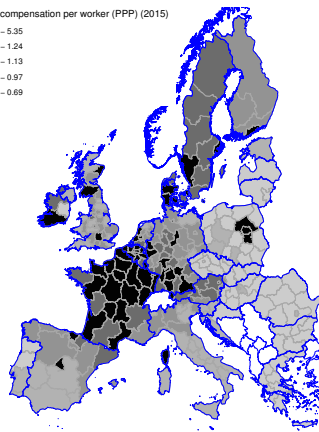
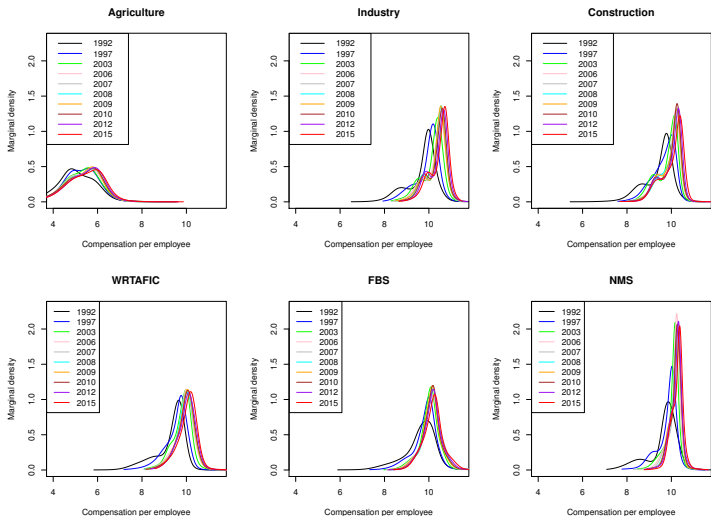


Figura: Map of relative compensation per employee in 1992

Figura: Map of relative compensation per employee in 2015

Sectoral distribution dynamics



Sectoral distribution dynamics (rel.)

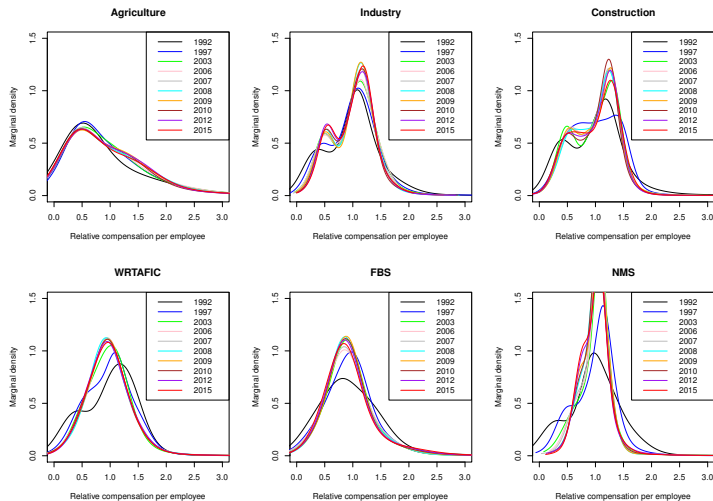


Figura: Distribution dynamics at sectoral level